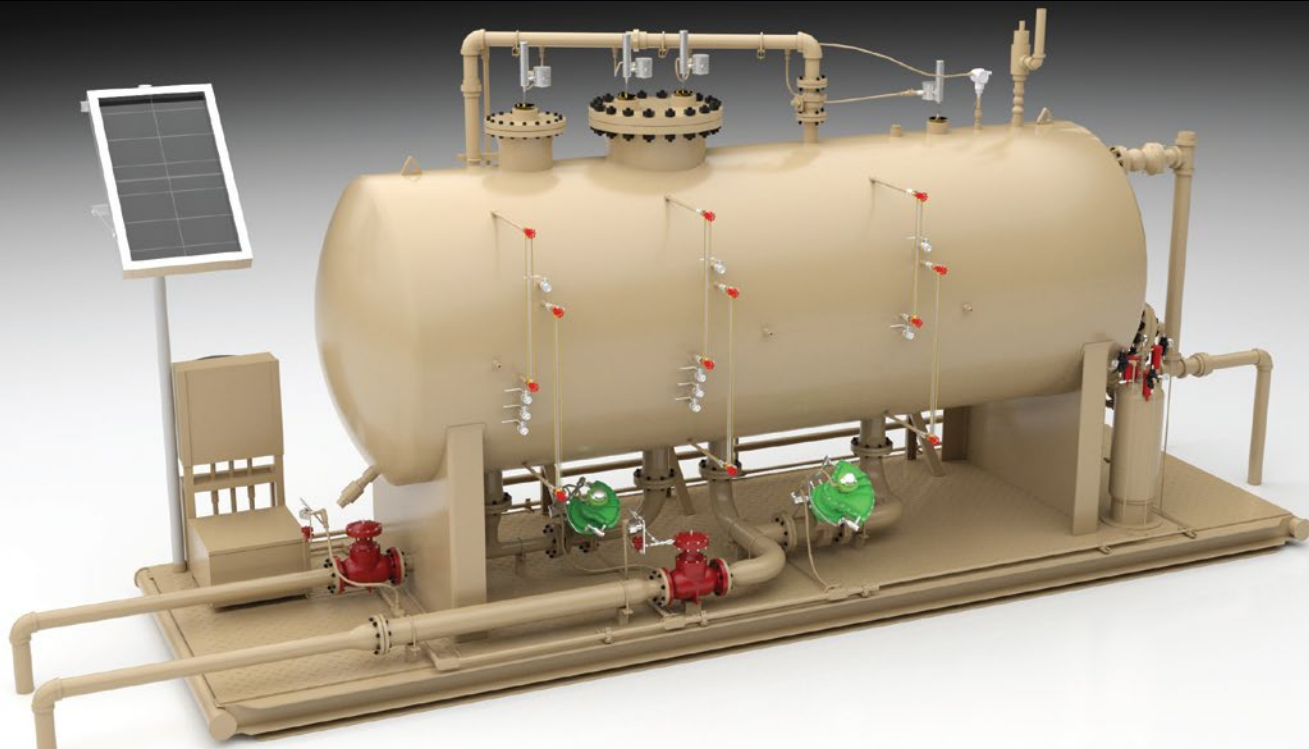


# IntelliPRO

SMART THREE-PHASE SEPARATOR



## CONTROL SOLUTIONS FROM ADVANCED TELEMETRICS



Advanced Telemetry IntelliPRO Smart Three-Phase Separator provides producers with efficient, accurate, real-time data, for all completion and production applications including exploration, appraisal, flowback and well testing.

The data acquired from the IntelliPRO will provide engineering teams with key information to direct them in well completion design, facility planning, as well as other important decision to optimize well production and maximize return on investment.

The IntelliPRO is a fully self-contained separator meeting all ASME code requirements, skid-mounted, and sized to fit your site specifications based on gas rate (MCF/D), oil rate (BBL/D), water rate (BBL/D), and pressure (PSIG).

### IntelliPRO Applications

- Exploration & Appraisal
- Early Production Testing
- Developmental Well Testing
- Permanent testing on a well or facility application

## IntelliPRO Features



- Self-contained 24 volt solar powered or 120 VAC
- Control system with 10" HMI display
- Onboard communications
- Integrated SCADA interface displays in real-time:
  - Monitor precise product levels, water levels, fluid temperature, pressures and gas flow
  - Customized periodic reporting
  - Detailed process trending
  - Alarm notification
  - Online operating vessel level adjustments
- Optional verification against API tank levels measured with Advanced Telemetry Tank Gauges

# Real-Time SCADA Analytics & Control

**Resource** AUTOMATION & ELECTRICAL

Home Compressors Controllers Flare IntelliPRO Meters Gas Meters Liquid Pumps Tanks Valves Vessels Wellhead Trends Events Alarms

User: ddeweese Time: 2019-03-19 10:05:33

Company: Any Oil Company Area: Pecos Field: Orion Route: Beta 7 Location: Orion Battery 2 Page: IntelliPRO

Well Selected: Beta 7  
Test Duration: 24 Hours  
Cycle Remai. Time: 22:31:49

Parameter	Value	Parameter	Value	Parameter	Value
Static Pressure	51.0 PSIA	Total Fluid Level	46.29 IN	Total Fluid Level	15.8 IN
Pressure	36.56 PSIG	Water Level	11.26 IN	Water Level	0.0 IN
Temperature	47.92 °F	Temperature	51.44 °F	Temperature	44.96 °F
Oil Pad Thickness	35.03 IN	Oil Pad Thickness	18.74 IN	Oil Pad Thickness	15.9 IN
Oil Volume	23.35 BBLS	Oil Volume	7.31 BBLS	Oil Volume	2.97 BBLS
Water Volume	4.03 BBLS	Water Volume	6.03 BBLS	Water Volume	0.0 BBLS
Total Volume	27.37 BBLS	Total Volume	13.34 BBLS	Total Volume	2.97 BBLS

**Water Dump Valve**   
 Water Dump Valve Open Setpoint: 25 IN  
 Water Dump Valve Close Setpoint: 14 IN

**Oil Dump Valve**   
 Oil Dump Valve Open Setpoint: 10 IN  
 Oil Dump Valve Close Setpoint: 14 IN

Parameter	Value	Parameter	Value	Parameter	Value
Gas Test Rate (Instantaneous Rate/Totalflow Meter)	127.39 MCF/D	Gas Test Average Rate	240.7 MCF/D	Gas Test Volume (Accumulated Test Period Volume)	80.98 MCF
Oil Process Rate (60 Min Rate/10 Min Update)	37.64 BBLSD	Oil Test Average Rate	31.44 BBLSD	Oil Test Volume (Accumulated Test Period Volume)	9.74 BBLS
Water Process Rate (60 Min Rate/10 Min Update)	130.41 BBLSD	Water Test Average Rate	135.5 BBLSD	Water Test Volume (Accumulated Test Period Volume)	37.05 BBLS
Total Process Rate (60 Min Rate/10 Min Update)	188.0 BBLSD	Total Test Average Rate	166.94 BBLSD	Total Test Volume (Accumulated Test Period Volume)	48.79 BBLS

Alarms Trends Log Data Log Config Overview Chamber A Chamber B O Chamber B W Chamber C Gas Meter Valves PLC Totals Test Summary

Monitor your operation from anywhere in the world on any PC or mobile device with real-time SCADA.



### Accumulators

Oil Test Volume (Accumulated Test Period Volume)	3.95 BBLS	Oil Test Volume Corrected	3.95 BBLS
Oil Total Today	26.0 BBLS	Oil Total Today Corrected	26.0 BBLS
Oil Total Yesterday	433.0 BBLS	Oil Total Yesterday Corrected	433.0 BBLS
Oil Total Month	1365.0 BBLS	Oil Total Month Corrected	1164.4 BBLS
Oil Total Last Month	2296.0 BBLS	Oil Total Last Month Corrected	9678.0 BBLS
Oil Gross Accumulated	22256.0 BBLS	Oil Gross Accumulated Corrected	120632.0 BBLS
Water Test Volume (Accumulated Test Period Volume)	26.37 BBLS	Gas Test Volume (Accumulated Test Period Volume)	49.59 MCF
Water Total Today	80.0 BBLS	Volume Today	854.97 MCF
Water Total Yesterday	1365.0 BBLS	Volume Yesterday	1549.48 MCF
Water Total Month	5273.0 BBLS	Last Calculated Period Volume	31.06 SCF
Water Total Last Month	7748.0 BBLS	Total Accumulated Volume	88995.28 MCF
Water Gross Accumulated	58136.0 BBLS		

### Chamber A

Total Fluid Level	47.64 IN	Product Float Speed	-0.21 IN/MIN
Water Level	16.18 IN	Water Float Speed	-11.51 IN/MIN
Temperature	66.29 °F	Float Speed Alarm	NORMAL
Oil Pad Thickness	31.47 IN		
Oil Volume	21.5 BBLS		
Water Volume	6.78 BBLS		

H Alarm: NORMAL  
 H Setpoint: 52 IN  
 HH Alarm: NORMAL  
 HH Setpoint: 55 IN  
 HH Level Switch: NORMAL

### Well Tested

ENCORE M STATE #019 Devonian

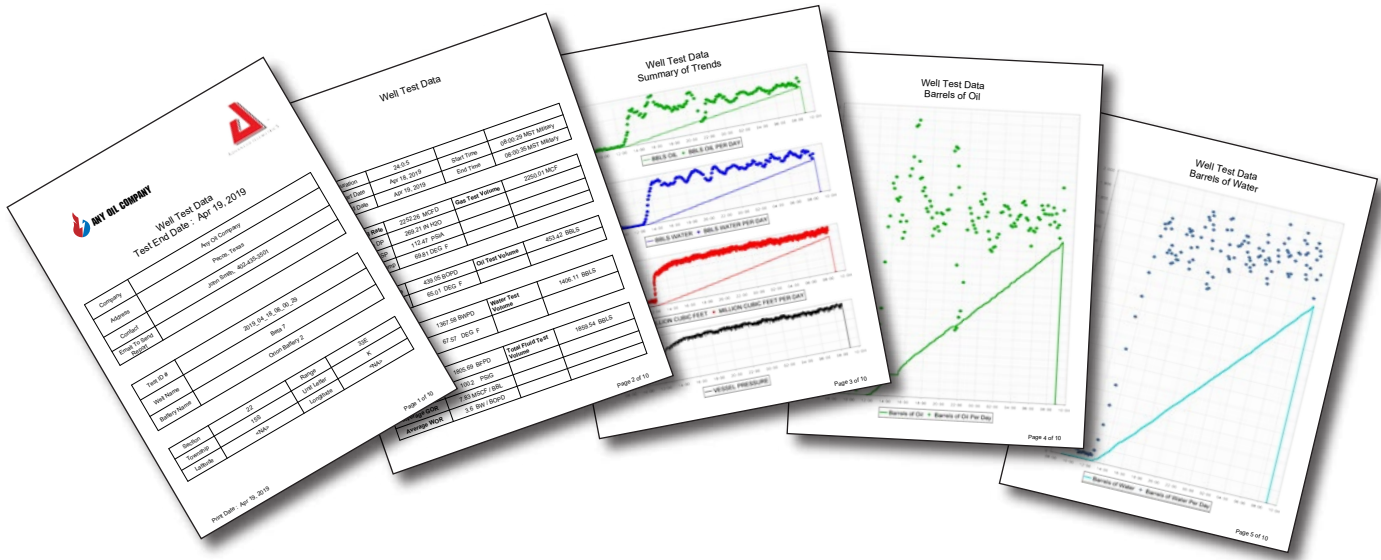
Duration: 24  
 Test Cycles: 1

Current State: **SAMPLING** Elapsed Time: 0:26:11 Cycle Start Time: 2019-04-19 08:02:13

Test Duration: 24 Hours Remaining Time: 23:33:58 Cycle Finish Time: 2019-04-20 08:02:13

Parameter	Value	Parameter	Value
Oil Test Volume (Accumulated Test Period Volume)	3.95 BBLS	Oil Test Volume Corrected	3.95 BBLS
Oil Process Rate (60 Min Rate/10 Min Update)	1162.0 BBLSD	Oil Test Volume Yesterday	134.96 BBLS
Water Process Rate (60 Min Rate/10 Min Update)	1162.0 BBLSD	Water Test Volume (Accumulated Test Period Volume)	26.37 BBLS
Total Process Rate (60 Min Rate/10 Min Update)	2324.0 BBLSD	Water Test Volume Yesterday	433.0 BBLS

# Comprehensive Reporting

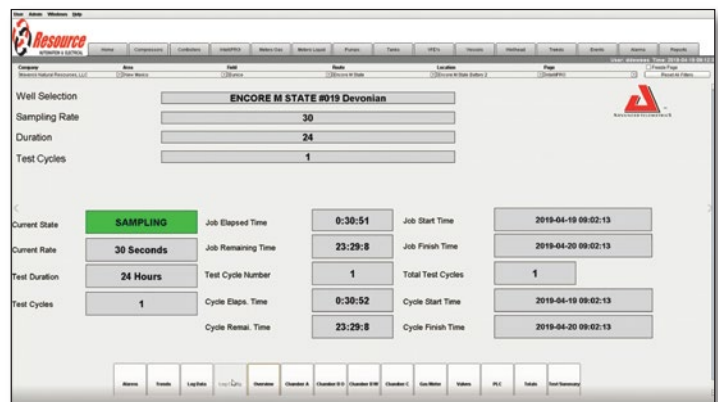


## Receive the most detailed well test reports in the industry

Evaluate your well with detailed reports containing key data points including average gas rate, average oil rate, average water rate, and total fluid rate. Receive detailed well test reports sent directly from the IntelliPRO unit via email to your PC or mobile device.

### Test Interval Rates

- 1 Hour
- 4 Hours
- 6 Hours
- 12 Hours
- 24 Hours



Call us for more information about the IntelliPRO at 1-800-382-1482 or visit our website at [www.advancedtelemetrics.net](http://www.advancedtelemetrics.net)

